



- TASTE THE DIFFERENCE -

MODEL 66TF

Our highest volume floor model gravity soft serve machine features two-flavors with a twist and is good for both self-serve or full service operations. Perfect for high-volume ice cream stores, QSRs, sport venues and buffets.

The Electro Freeze Advantage

- **Meets ADA Specifications** for self service applications
- **The Finest Frozen Product**, consistently the best frozen product available. Smooth, creamy and profitable
- **Self Closing Spigots** prevents the mess and eliminates waste
- **Adjustable Dispense Rate** set to meet your specific dispensing speed and volume requirements
- **Exclusive Auger Design** gently blends, reducing agitation and maintaining product quality and consistency
- **Energy Conservation Mode** reduces energy cost and holds product safely during non-business hours
- **Experience Tells** Electro Freeze has been manufacturing quality frozen treat machines since 1929. Superior engineering, product innovations, sturdy construction, quality craftsmanship and dependable performance are Electro Freeze hall-marks.
- **Superior Service Support** backed by a world-wide distributor network.

GRAVITY SOFT SERVE FREEZER

2 Flavor Twist
High Volume

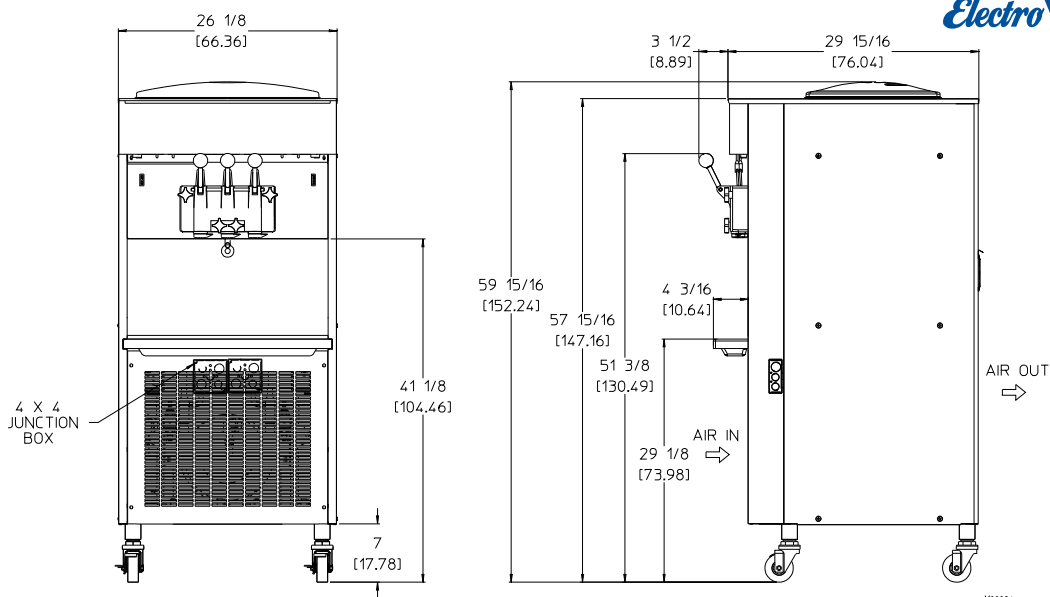


electrofreeze.com

FOR MORE INFORMATION CONTACT

800-755-4545 • sales@electrofreeze.com

66TF Soft Serve Freezer



MODEL 66TF SPECIFICATIONS

Due to continual product improvements all specifications are subject to change without notice.

Weights	lbs.	kgs.	
Net	665	301	
Crated	764	346	
	cu.ft.	cu.m.	
Volume	58.42	1.65	
Dimensions	in.	cm.	
Width	26-1/8	66.36	
Depth	29-15/16	76.04	
Height	57-11/16	151.61	
Electrical	Maximum Fuse Size (Qty)	Minimum Circuit Ampacity (Qty)	Poles (P) Wires (W)
208-230/60/1 Air	30 (2)	25.0 (2)	2P 2W
208-230/60/1 Water	30 (2)	23.5 (2)	2P 2W
208-230/60/3 Air	20 (2)	17.5 (2)	3P 3W
208-230/60/3 Water	20 (2)	16 (2)	3P 3W

Electrical characteristics other than above available on request from factory or local distributor. Check nameplate for exact electrical data.

Bidding Spec

Electrical: Volt _____ Hz _____ Ph _____
Cooling: _____ Neutral _____ Yes _____ No
Options: _____

Electrical

Two dedicated electrical connections are required. Manufactured to be permanently connected. See electrical chart for the proper requirement. Consult your local Electro Freeze distributor for cord and receptacle specifications as local does permit.

Beater Motor

Two, 1-1/2 hp.

Refrigeration Systems

Two, 9500 Btuh. R404a.

Btuh may vary depending on compressor used.

Air and Water Cooled

6" (15.2 cm) air space required on all louvered panels for proper air circulation.

Mix Hopper Capacity: two - 16 quarts (15 liters) each

Freezing Cylinder Capacity: two - 3.7 quarts (3.5 liters) each

Certified and/or listed by:



*UL listed and listed by Underwriters Laboratories under Canadian National Standard C22.2 No. 120-M91 (R2008)



Electro Freeze div. of H.C. Duke & Son, LLC

2116-8th Avenue, East Moline, Illinois 61244

Phone (309) 755-4553 • (800) 755-4545

FAX (309) 755-9858

E-mail: sales@electrofreeze.com • www.electrofreeze.com

Authorized Distributor